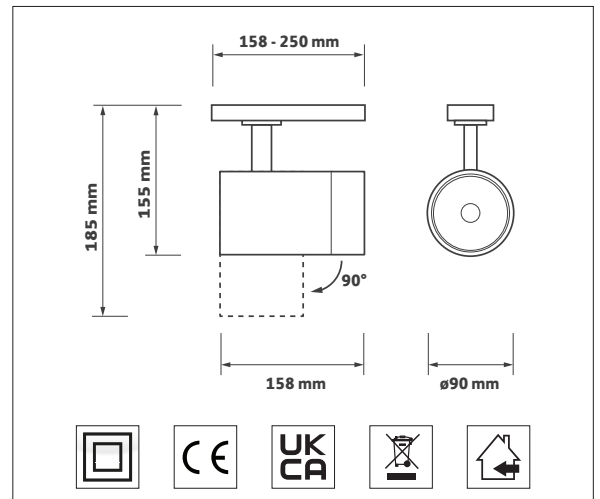




### KEY FEATURES

- Professional minimalist LED track mounted spotlight
- Finished in white as standard with black option
- Features Vossloh LED and in-track driver system
- Features a 40° medium beam lens as standard
- 18°, 24°, 60° lens options
- Ra80 with Ra90 options
- MacAdam colour tolerance 3 SDCM
- Lumen maintenance L90 @ 55,000 hours
- DALI and wireless control options
- Range of interchangeable accessories available
- 5 year warranty

### DIMENSIONS



### ORDERING INFORMATION

Luminaire output (lm)	Colour	Luminaire power (tcW)	Luminaire efficacy (lm/tcW)	Model ref.
1875	830	11.5	163	<b>BF001</b>
1925	840	11.5	167	<b>BF002</b>
2925	830	19.0	154	<b>BF003</b>
3025	840	19.0	159	<b>BF004</b>
4225	830	31.5	134	<b>BF005</b>
4350	840	31.5	138	<b>BF006</b>
5075	830	39.5	128	<b>BF007</b>
5225	840	39.5	132	<b>BF008</b>

### OPTIONS

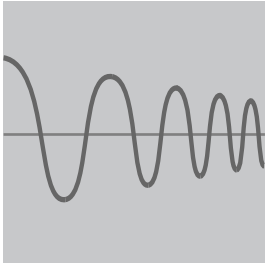
Options	Suffix
Black body	<b>/BK</b>
Beam options	<b>/SNB, /NB, /WB</b>
Ra90	<b>/9</b>
Control gear	<b>/MDIM, /DALI, /BTC</b>
Long snoot	<b>/LSW, /LSB</b>
Asymmetric snoot	<b>/ASW, /ASB</b>
Honeycomb louvre	<b>/HC</b>



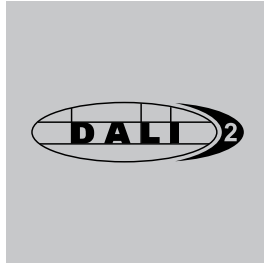
**/BK**  
Black



**/HC**  
Honeycomb louvre



**/MDIM**  
Mains dimming



**/DALI**  
DALI control gear



**/BTC**  
Casambi wireless network  
inc. dimming



**/9**  
Ra90 high colour  
rendering LED module



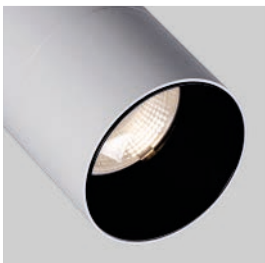
**/SNB**  
18° super narrow beam



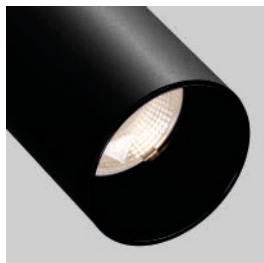
**/NB**  
24° narrow beam



**/WB**  
60° wide beam



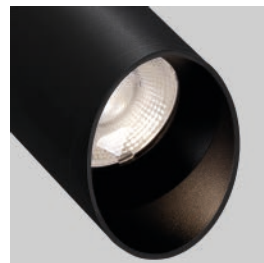
**/LSW**  
Long snout  
White



**/LSB**  
Long snout  
Black



**/ASW**  
Asymmetric adjustable  
snout - White



**/ASB**  
Asymmetric adjustable  
snout - Black



# Jingo-2 - BF

## Options and accessories



Membership No 1835

### PV - PRODUCT VARIATIONS



#### PV - Contact Sales

Tunable white for HCL



#### PV - Contact Sales

Philips MasterConnect wireless control



#### PV - Contact Sales

HubSense wireless control



#### PV - Contact Sales

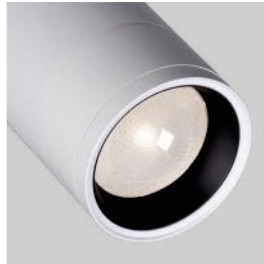
Any RAL colour

### RELATED PRODUCTS



#### See Jingo-2 BE

ø64 mm



#### See Jingo-2 BH

Zoom snoot



#### See Jingo-2 BI

Framing projector



#### Track and accessories

See Stucchi OneTrack® datasheet



#### BTWS001

Wireless Casambi single wall switch



#### BTWS002

Wireless Casambi twin wall switch

Thornhill Road Business Park  
Tenter Fields, Dewsbury  
West Yorkshire  
WF12 9QT  
+44 (0)1924 482777  
www.gamma-uk.com



Please note: Specification values may change due to rapid development of lighting technology. All performance data is taken at an ambient temperature of +25°C. Data may be rounded up/down for illustrative purposes. We reserve the right to amend or change details without prior notification. E&OE.