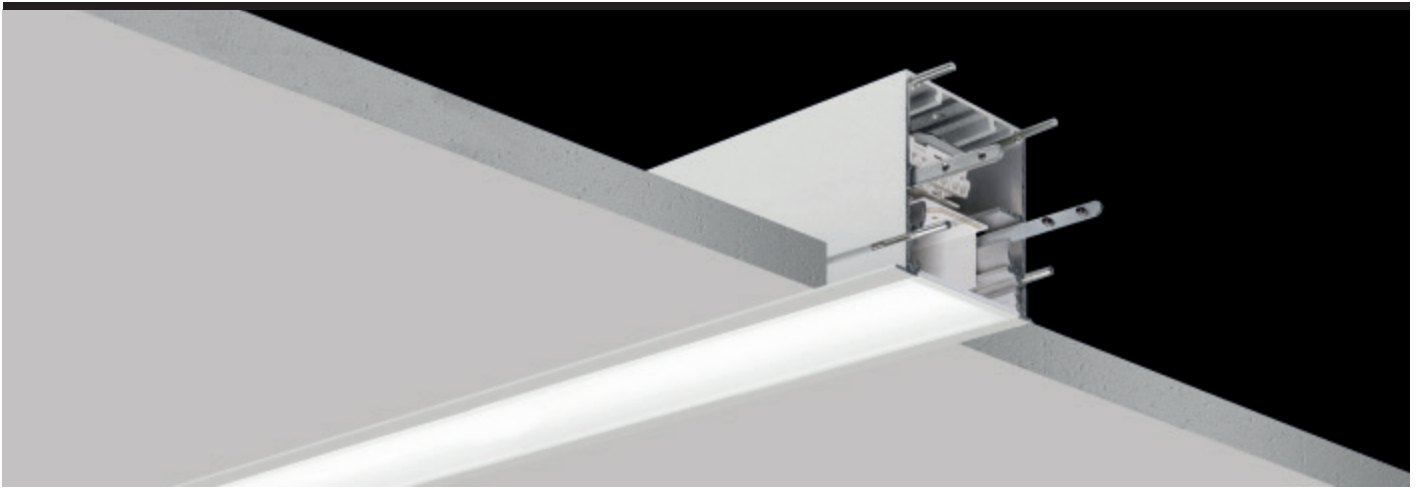


PROFLUX - AHC

DATASHEET

TRIDONIC
TECHNOLOGY
INSIDE

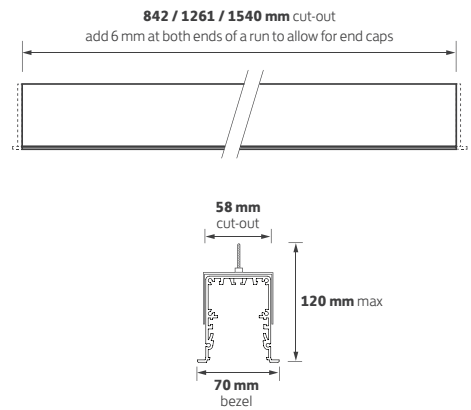
GAMMA
ILLUMINATION



Key Features

- Recessed, continuous extruded linear profile system
- Through wiring in all lengths
- Tridonic LED and driver combinations
- TP(a) elegant opal lens for general areas as standard
- Low glare prismatic lens available to aid LG7 compliance
- Lumen maintenance L80/F10 @ >72,000 hours
- Excellent efficacies of up to 127 lm/tcW
- Available in 3 standard 'building block' lengths
- Delivering approx. 2200 lm/m as standard
- Manufactured, tested and validated in the U.K.

Technical Drawing



Ordering Information

Length	Colour	Luminaire output (llm)	Model Ref.	Luminaire output (llm)	Luminaire output (llm)
		Std		/LO	/HO
850 mm	830	1725	AHC001	1175	2725
850 mm	840	1825	AHC002	1225	2875
1.2 m	830	2575	AHC003	1750	4100
1.2 m	840	2725	AHC004	1850	4300
1.5 m	830	3150	AHC005	2150	5000
1.5 m	840	3325	AHC006	2250	5250

Options

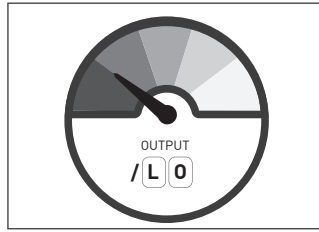
Please select from the options below.

Pair of end caps accessories	SECAP
1 x joining / through wire accessory kit	JKIT
Low glare prismatic lens for LG7 compliance	/LG
SwitchDIM, DALI or DSI	/ECO
EM conversion (not AHC001 / AHC002)	/EMI

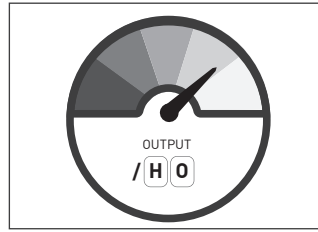
Options



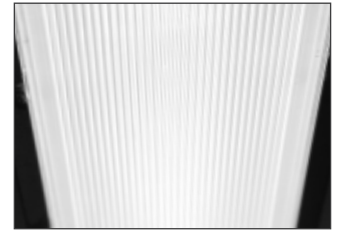
SECAP
Pair of end caps



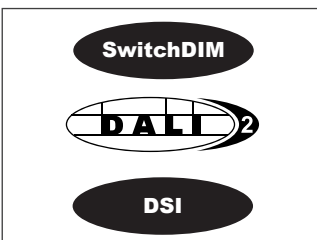
/LO
Lower output



/HO
Higher output



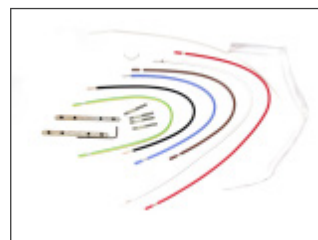
/LG
Low glare prismatic lens



/ECO
SwitchDIM, DALI or DSI



/EMI
EM conversion



JKIT
Joining / through wiring kit



PT001
Diffuser removal tool