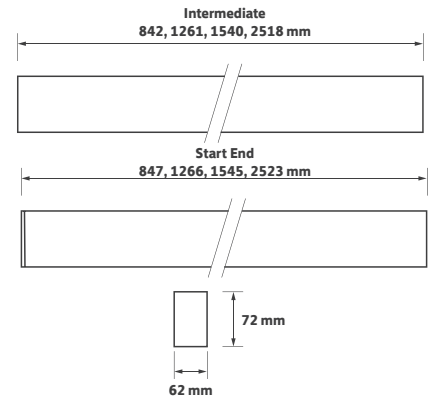


Key Features

- Continuous direct, extruded linear profile system
- Features through wiring for simple electrical connection
- Mechanical joining kit with every product
- Start / End piece includes end cap
- Available in 4 building block lengths
- Delivering approx. 2200 ltm/m as standard
- Suitable for surface mount or suspension fixing
- Finished in RAL 9006 grey as standard
- TPa opal lens for general and visual areas as standard
- Low glare prismatic lens available to aid LG7 compliance
- Tridonic low energy LED and driver system
- Lumen maintenance L80/F10 @ >72,000 hours
- Manufactured in the U.K.

Technical Drawing



Ordering Information

Length	Colour	Luminaire	Intermediate	Luminaire	Luminaire
		Output (ltm)	Model Ref.	Output (ltm)	Output (ltm)
		Std		/LO	/HO
850 mm	830	1725	AGC001	1175	2725
850 mm	840	1825	AGC002	1225	2875
1.2 m	830	2575	AGC003	1750	4100
1.2 m	840	2725	AGC004	1850	4300
1.5 m	830	3150	AGC005	2150	5000
1.5 m	840	3325	AGC006	2250	5250
2.5 m	830	5150	AGC007	3500	8175
2.5 m	840	5425	AGC008	3675	8575

Options

Please select from the options below.

Start / End section with end cap	/SE
White body	/WH
Black body	/BK
Lower output	/LO
Higher output	/HO
Low glare prismatic lens for LG7 compliance	/LG
SwitchDIM, DALI or DSI	/ECO
EM conversion (not AGC001 / AGC002)	/EMI
Suspension kit	/SUS

Options



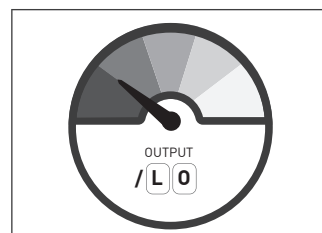
/SE
Start / end section with end cap



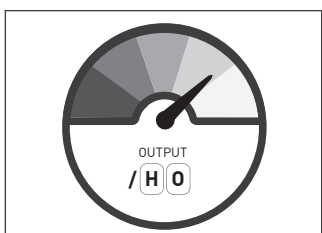
/WH
White body



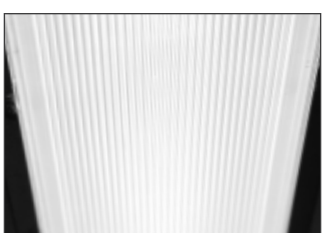
/BK
Black body



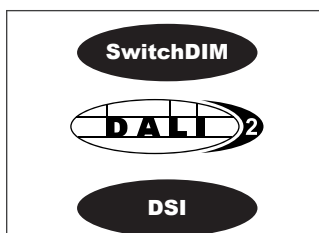
/LO
Lower output



/HO
Higher output



/LG
Low glare prismatic lens

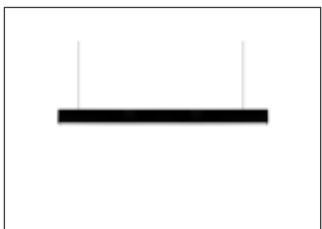


/ECO
SwitchDIM, DALI or DSI

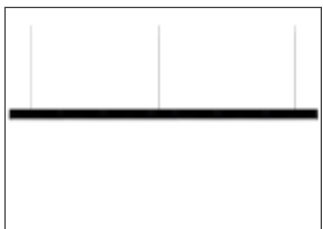


/EMI
EM conversion

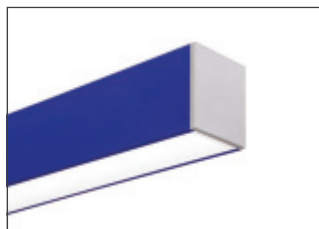
Accessories



SUS.163/2/2M
2 m 2 pcs suspension kit
(not 2.5 m)



SUS.163/3/2M
2 m 3 pcs suspension kit
(for 2.5 m)



Product variations
Custom colours



PT001
Diffuser removal tool