

# INSTALLATION GUIDE:

LED DOWNLIGHT  
990.0189.01



## IMPORTANT:

The luminaire must not be covered by any debris or insulating material. Ensure there is a minimum of 50 mm airspace around the luminaire. Electrical termination must be carried out by a qualified electrician in accordance with the latest edition of IEE wiring regulations BS7671.

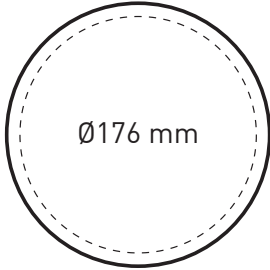
**NOTE: THE LED MODULES IN THIS LUMINAIRE ARE NON-USER REPLACEABLE.**

**PLEASE RETAIN THIS GUIDE FOR FUTURE REFERENCE AND RECYCLE PACKAGING.**

### A

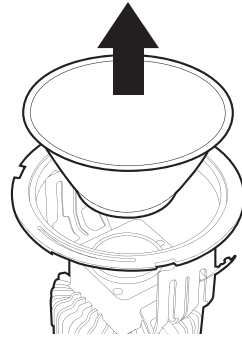


**ISOLATE MAINS SUPPLY BEFORE COMMENCING INSTALLATION**



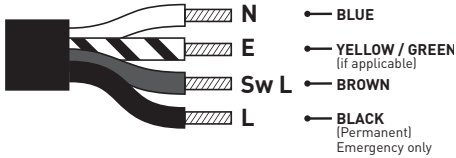
- Cut a 176 mm circular hole at the desired location using a holesaw.

### B



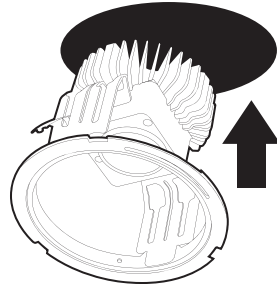
- Remove reflector from luminaire taking care not to damage the reflector's surface.

### C



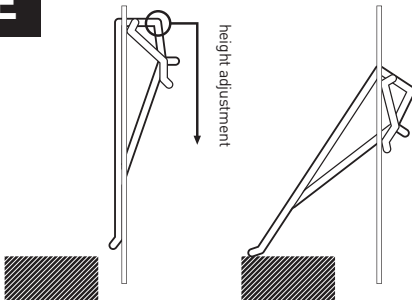
- Connect the luminaire to the mains supply using a terminal block (not supplied) compliant with the requirements of EN60998-2-1 or 2-2.
- For Touch & Dim / DALI wiring see instruction leaflet 990.0009.01.

### D



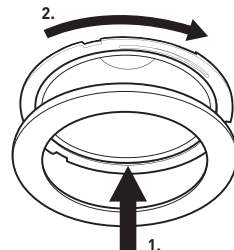
- Insert luminaire into the ceiling void.

### E



- Lock the luminaire in place by means of the four adjustable fixing springs as illustrated above.

### F



- Carefully relocate the reflector.
- Install the twist and lock bezel and any decorative accessories to hold the reflector in place.



**REINSTATE MAINS SUPPLY**