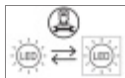


LED downlight

INSTALLATION GUIDE

990.0380.02 REV 2 - 29/11/2023

Important



The light source and control gear in this luminaire shall only be replaced by the original manufacturer, service agent or a similarly qualified person.



This luminaire must not be covered with thermally insulating material.

For light source energy class information, please refer to relevant technical datasheet.

Fixed bezel versions: This luminaire has an ingress protection rating of **IP54** from the room side once installed.

Tilt bezel versions: This luminaire has an ingress protection rating of **IP20** from the room side once installed.

Please retain this guide for future reference and recycle packaging.



Fixed bezel

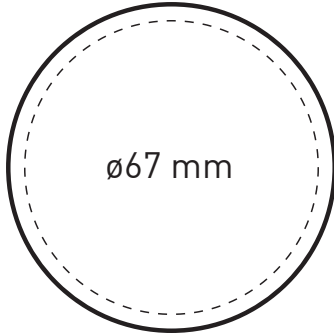
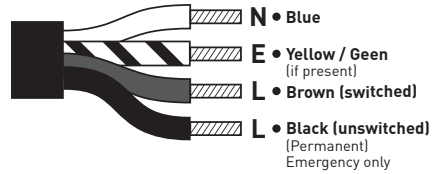
Tilt bezel

NOTE: Luminaire style may vary

A

ISOLATE MAINS SUPPLY BEFORE COMMENCING INSTALLATION

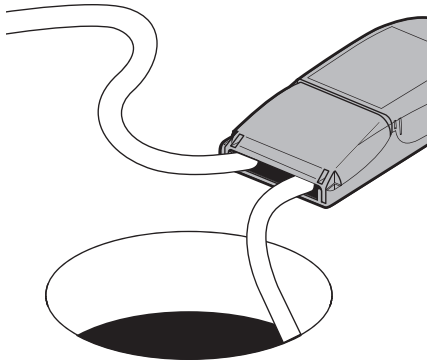
- Cut a $\varnothing 67$ mm circular hole at the desired location using a hole saw.

**B**

- Terminal block not included. Installation must be performed by a qualified person in accordance with the latest edition of the IEE wiring regulations BS7671.
- If no terminal block is available, carefully remove supply leads from control gear and connect directly into terminals, taking care to follow markings on housing.
- For variants fitted with DALI control gear, please refer to supplementary installation guide.

C

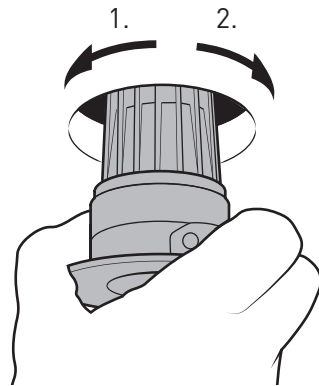
NOTE: Driver style may vary



- Insert driver into ceiling void.

D

NOTE: Luminaire style may vary



- Squeeze in the ceiling springs and push the luminaire up into the ceiling void, twisting anti-clockwise to locate (1) and then twist clockwise to secure (2). Ensure there is at least 50 mm air-space around the luminaire body and all control gear.
- To remove luminaire, carefully twist anti-clockwise whilst pulling the luminaire.



REINSTATE MAINS SUPPLY