

Case Study

Joshua Adams Menswear

Award-winning retailer's flagship store



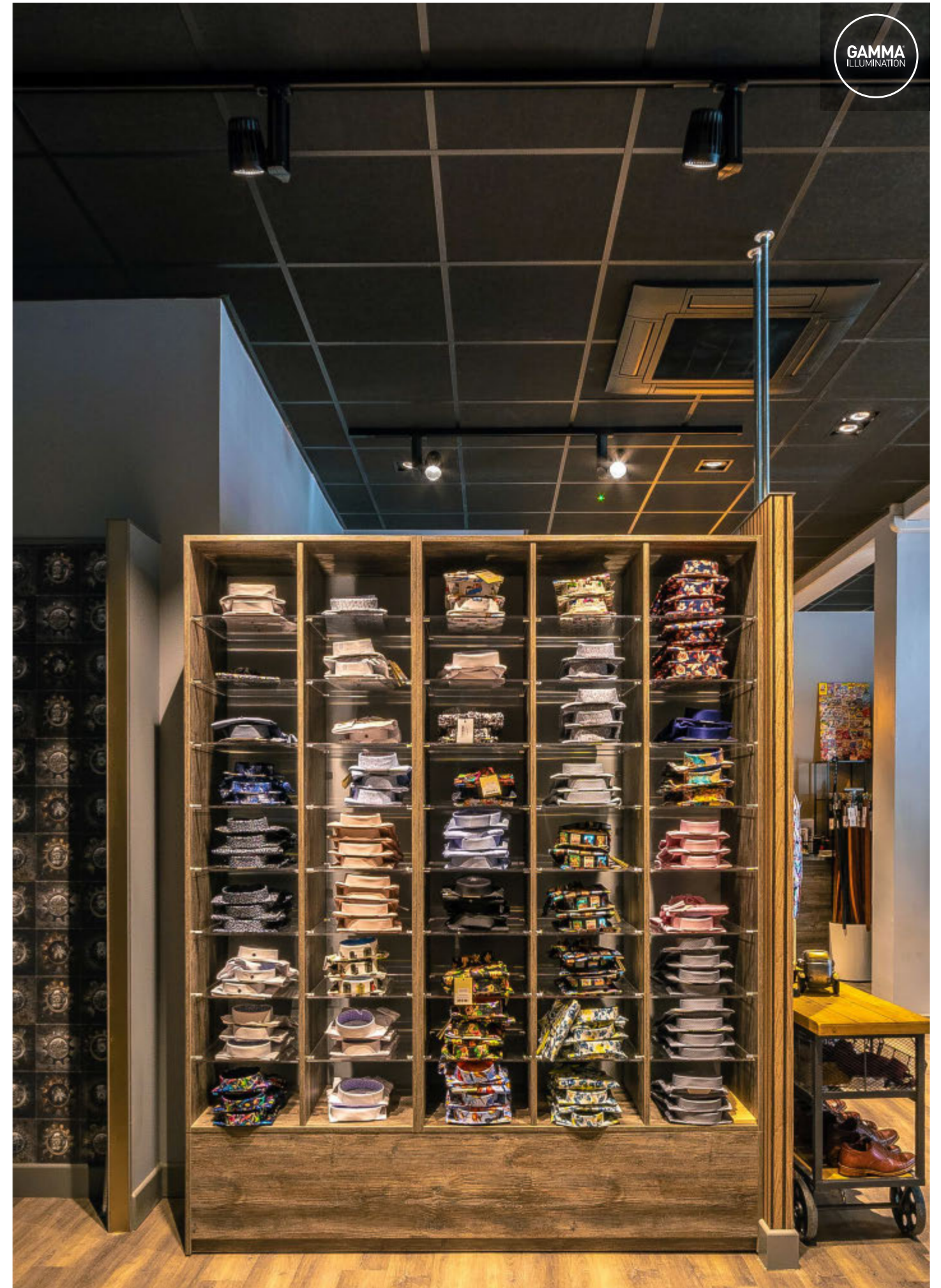
Spotlight on award-winning independent menswear retailer's new flagship store.





Award-winning Cleckheaton-based independent retailer **Joshua Adams Menswear** recently relocated to a new 4000 sq ft two-storey flagship store at the heart of their home town.

The store is divided into sales and suit hire departments and Gamma's **Lingo LTS**, **Boston GTS** and **Fame ABB** luminaires were chosen to provide display lighting throughout.



The store was designed to have a relatively dark ambience with the merchandise being picked out by bright display lighting. High colour rendering is key to make the

products really stand out and all the luminaires feature Philips Premium White Ra90 modules, with a colour temperature of 3000 K to give a warm, welcoming light.

All luminaires feature matching 40° multi-faceted reflectors for uniform performance and the bodies are finished in RAL 9005 Jet Black (matt) to tie in with the black ceiling.



GAMMA
ILLUMINATION

Lingo LTS



Boston GTS



Fame ABB


Contact me for further information
or to arrange a factory visit



Faye Wherrett-Inman

Marketing Executive

 01924 482777

 faye.wherrett@gamma-uk.com



Gamma Illumination

Thornhill Road Business Park
Tenter Fields
Dewsbury
West Yorkshire
WF12 9QT
United Kingdom

 01924 482777

 sales@gamma-uk.com

 www.gamma-uk.com

