

Case Study

Joshua Adams Menswear

Award-winning retailer's flagship store



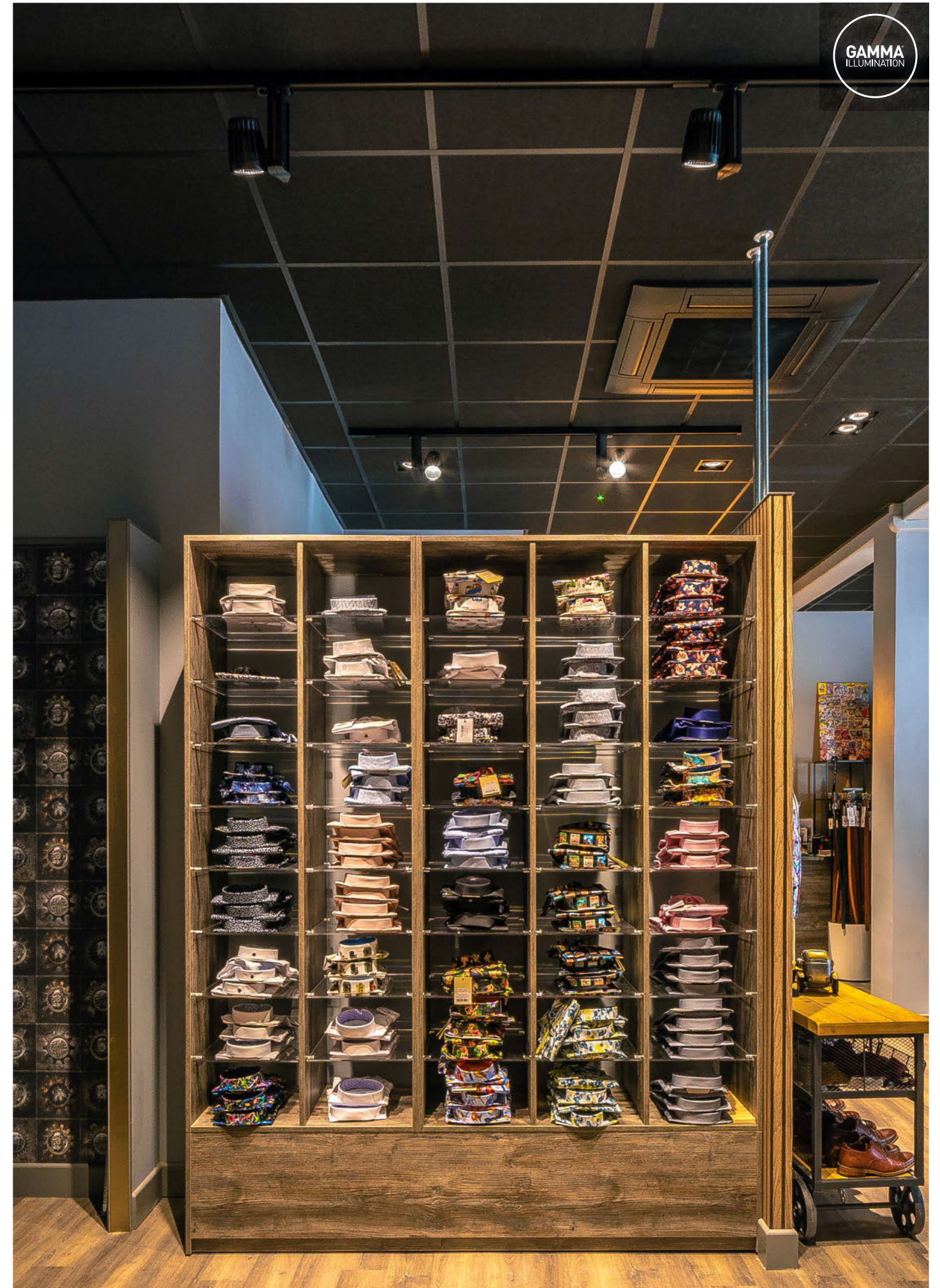
Spotlight on award-winning independent menswear retailer's new flagship store.





Award-winning Cleckheaton-based independent retailer **Joshua Adams Menswear** recently relocated to a new 4000 sq ft two-storey flagship store at the heart of their home town.

The store is divided into sales and suit hire departments and Gamma's **Lingo LTS**, **Gyro GTS** and **Fame ABB** luminaires were chosen to provide display lighting throughout.



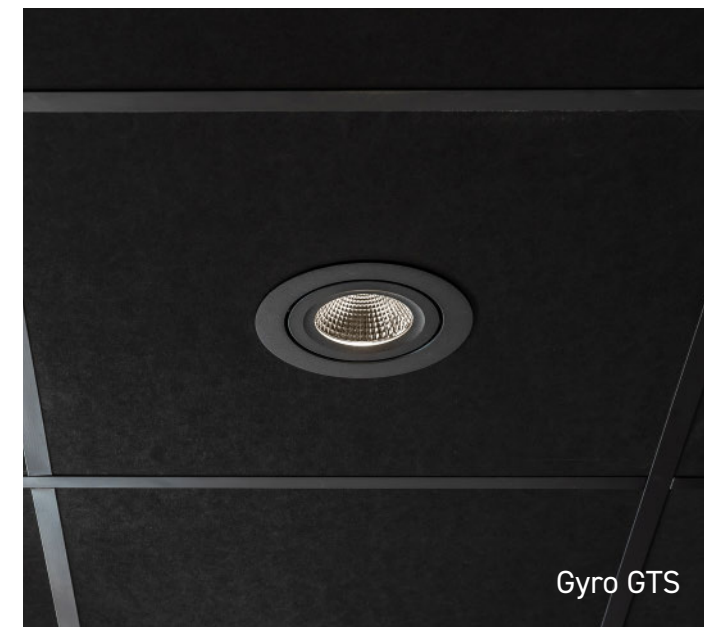
The store was designed to have a relatively dark ambience with the merchandise being picked out by bright display lighting. High colour rendering is key to make the

products really stand out and all the luminaires feature Philips Premium White Ra90 modules, with a colour temperature of 3000 K to give a warm, welcoming light.

All luminaires feature matching 40° multi-faceted reflectors for uniform performance and the bodies are finished in RAL 9005 Jet Black (matt) to tie in with the black ceiling.



Lingo LTS



Gyro GTS



Fame ABB

Contact Faye for further information
or to arrange a factory visit



Email me: faye.wherrett@gamma-uk.com
or call me: 01924 482777



Gamma Illumination

Thornhill Road Business Park
Tenter Fields
Dewsbury
West Yorkshire
WF12 9QT
United Kingdom

+44 (0)1924 482777
sales@gamma-uk.com

www.gamma-uk.com



FS 593079



Membership No 1835

