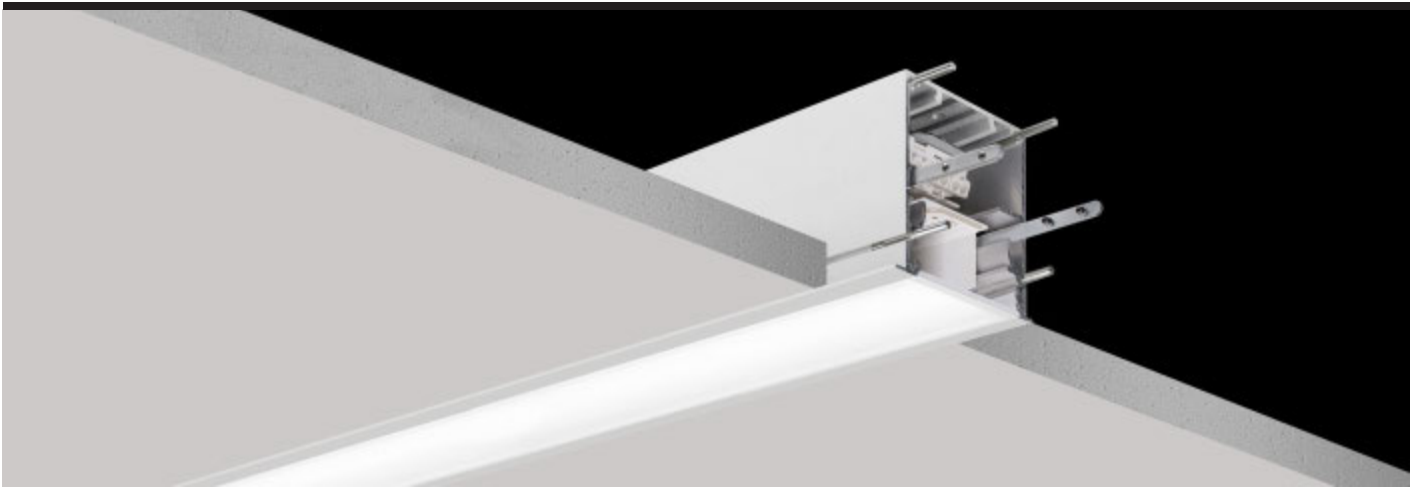


# PROFLUX - AHC

DATASHEET

TRIDONIC  
TECHNOLOGY  
INSIDE

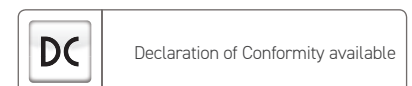
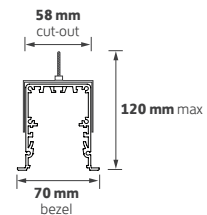
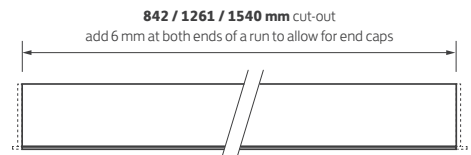
GAMMA  
ILLUMINATION



## Key Features

- Recessed, continuous extruded linear profile system
- Through wiring in all lengths
- Tridonic LED and driver combinations
- TP(a) elegant opal lens for general areas as standard
- Low glare prismatic lens option for LG7 compliance
- Lumen maintenance L80/F10 @ >72,000 hours
- Excellent efficacies of up to 127 llm/tcW
- Available in 3 standard 'building block' lengths
- Manufactured, tested and validated in the U.K.

## Technical Drawing



## Ordering Information

Length	Colour	Luminaire	Model Ref.	Luminaire	Luminaire
		output (llm) Std		output (llm) /LO	output (llm) /HO
850 mm	830	1725	<b>AHC001</b>	1175	2725
850 mm	840	1825	<b>AHC002</b>	1225	2875
1.2 m	830	2575	<b>AHC003</b>	1750	4100
1.2 m	840	2725	<b>AHC004</b>	1850	4300
1.5 m	830	3150	<b>AHC005</b>	2150	5000
1.5 m	840	3325	<b>AHC006</b>	2250	5250

## Options

Please select from the options below.

Pair of end caps	<b>SECAP</b>
1 x joining / through wire kit	<b>JKIT</b>
Low glare prismatic lens for LG7 compliance	<b>/LG</b>
SwitchDIM, DALI or DSI	<b>/ECO</b>
EM conversion (not AHC001 / AHC002)	<b>/EMI</b>

# PROFLUX - AHC

OPTIONS AND ACCESSORIES

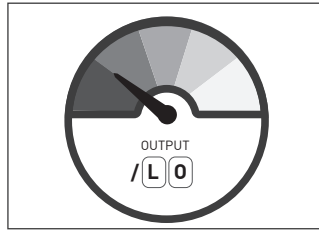
TRIDONIC  
TECHNOLOGY  
INSIDE

GAMMA  
ILLUMINATION

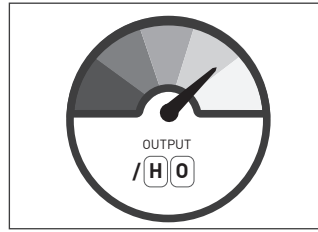
## Options



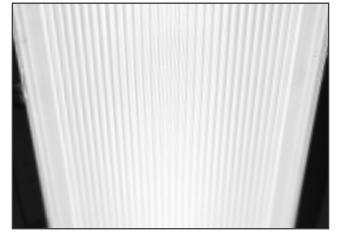
**SECAP**  
Pair of end caps



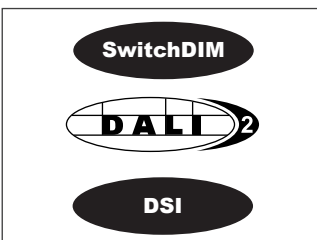
**/LO**  
Lower output



**/HO**  
Higher output



**/LG**  
Low glare prismatic lens



**/ECO**  
SwitchDIM, DALI or DSI



**/EMI**  
EM conversion



**JKIT**  
Joining / through wiring kit



**PT001**  
Diffuser removal tool

Thornhill Road Business Park  
Tenter Fields, Dewsbury  
West Yorkshire  
WF12 9QT  
+44 (0)1924 482777  
www.gamma-uk.com



FS 593079

